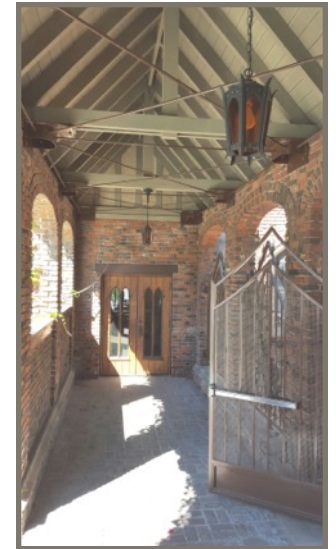




FOR LEASE
Creative Ground Floor Offices
95 North Marengo Avenue,
Pasadena, CA 91101



John E. Alle
Cell: (310) 990-7124
Office: (626) 795-1511

BRE #00778637

Email:
johnallecompany@gmail.com

Web:
johnallecompany.com

Office Address:
600 South Lake Avenue,
Suite 510
Pasadena, CA 91106

THE COURTYARD BUILDING

One block to Light Rail, Old Pasadena and City Hall, and close to Convention Center and Armory Center for the Arts. Parking available in City and privately-owned parking structures on the same block.

- Approximately 3,846 rentable square feet
- 20 foot high ceilings (wood-vaulted ceiling)
- Stained glass windows
- Cement floors
- Kitchenette
- Men's and women's restrooms inside suite and in Main Ground Floor Lobby
- Multiple entries
- Private brick courtyard

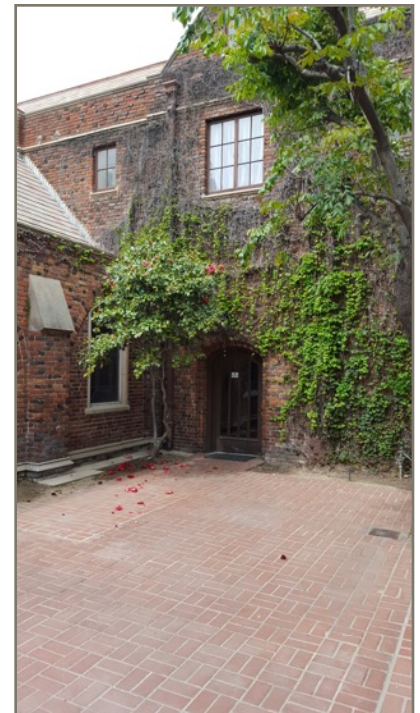
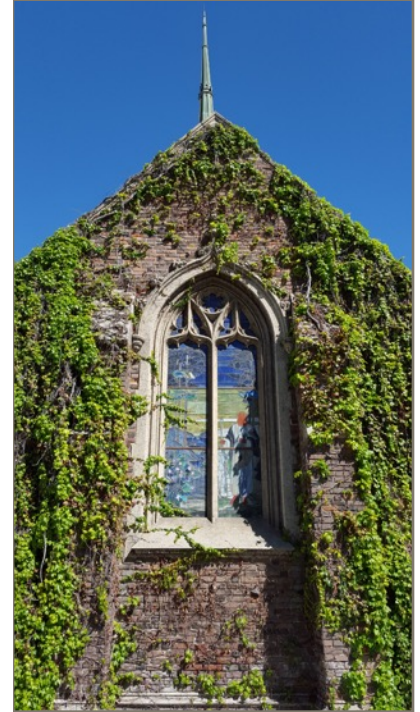


JOHN ALLE COMPANY
Commercial Real Estate Brokerage

FOR LEASE

Creative Ground Floor Offices

95 No. Marengo Avenue



All information contained herein is from sources deemed reliable but has not been verified and is submitted without any warranty or representation, expressed or implied, as to its accuracy, and John Alle Company assumes no liability for errors or omissions of any kind, change of price, rental or other conditions, including, without limitation, prior sale, lease or financing or withdrawal without notice. This presentation is for information only and under no circumstances whatsoever is to be deemed a contract, note, memorandum or any other form of binding commitment.



JOHN ALLE COMPANY
Commercial Real Estate Brokerage

FOR LEASE

Creative Ground Floor Offices

95 No. Marengo Avenue



John E. Alle
Cell: (310) 990-7124
Office: (626) 795-1511

BRE #00778637

Email:
johnallecompany@gmail.com

Web:
johnallecompany.com

Office Address:
600 South Lake Avenue,
Suite 510
Pasadena, CA 91106

All information contained herein is from sources deemed reliable but has not been verified and is submitted without any warranty or representation, expressed or implied, as to its accuracy, and John Alle Company assumes no liability for errors or omissions of any kind, change of price, rental or other conditions, including, without limitation, prior sale, lease or financing or withdrawal without notice. This presentation is for information only and under no circumstances whatsoever is to be deemed a contract, note, memorandum or any other form of binding commitment.

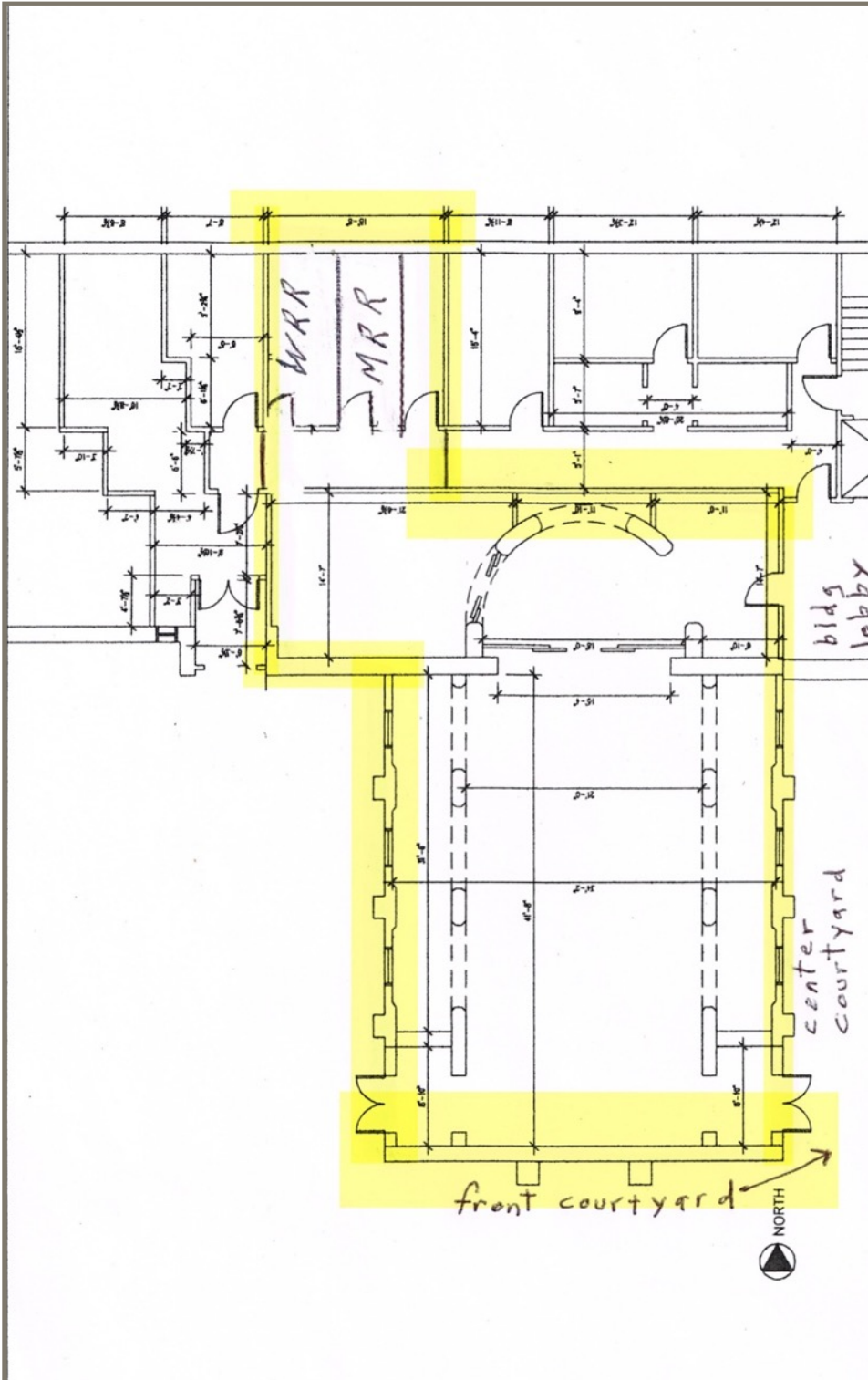


JOHN ALLE COMPANY
Commercial Real Estate Brokerage

FOR LEASE

Creative Ground Floor Offices

95 No. Marengo Avenue



VACANT
95 NORTH MARENGO, 1st FLOOR
PASADENA, CA

Creative Energy
architecture and interiors
241 East Colorado Boulevard, Suite 203
Pasadena, California 91101



All information contained herein is from sources deemed reliable but has not been verified and is submitted without any warranty or representation, expressed or implied, as to its accuracy, and John Alle Company assumes no liability for errors or omissions of any kind, change of price, rental or other conditions, including, without limitation, prior sale, lease or financing or withdrawal without notice. This presentation is for information only and under no circumstances whatsoever is to be deemed a contract, note, memorandum or any other form of binding commitment.